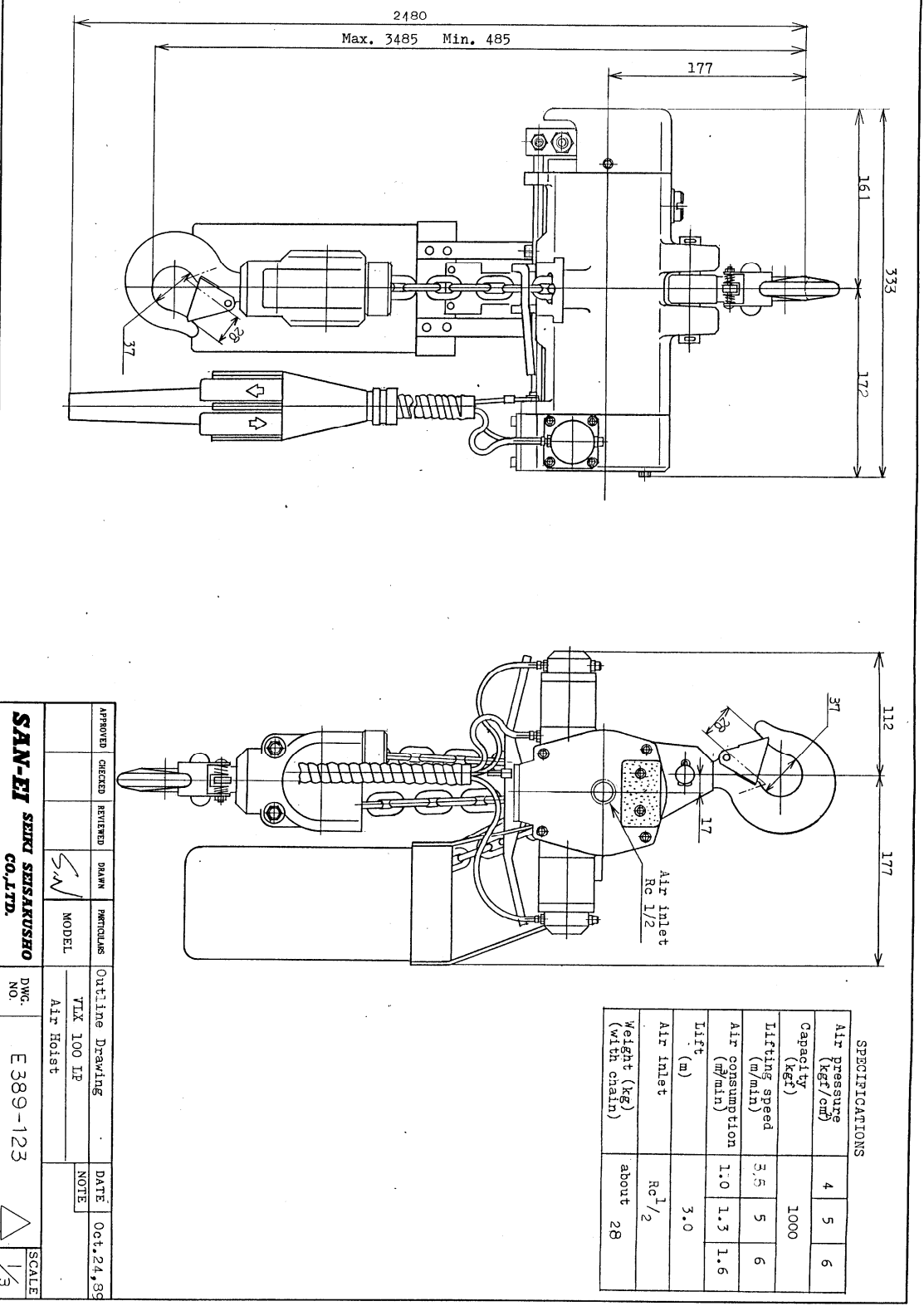


VLX100LP

出図先
承認
大北
計組
組計
出検
控計

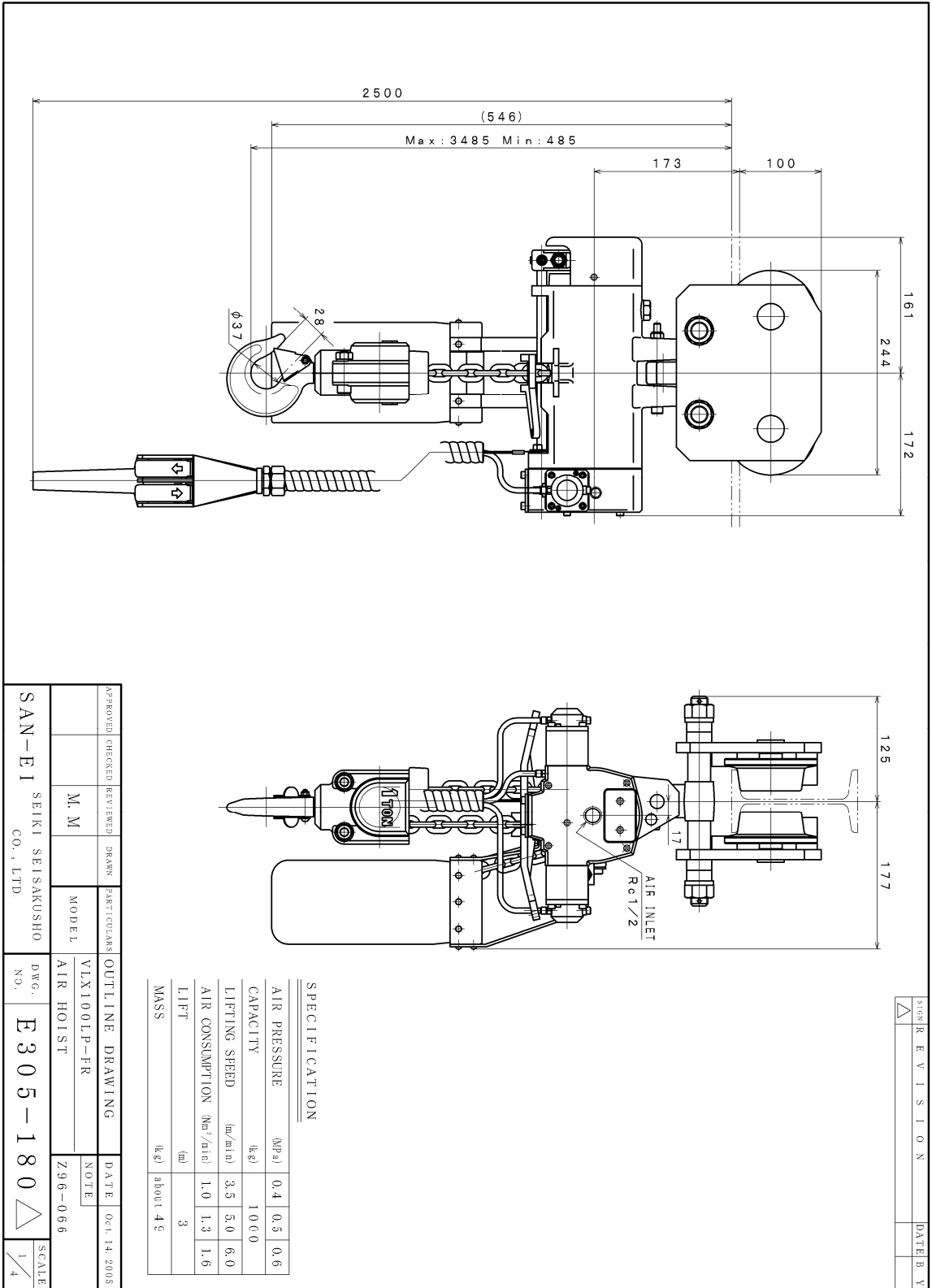


SPECIFICATIONS

Air pressure (kgf/cm ²)	4	5	6
Capacity (kg)	1000		
Lifting speed (m/min)	3.5	5	6
Air consumption (m ³ /min)	1.0	1.5	1.6
Lift (m)	3.0		
Air inlet	Rc 1/2		
Weight (kg) (with chain)	about 28		

APPROVED	CHECKED	REVIEWED	DRAWN	PARTICULARS	Outline Drawing	DATE	Oct. 24, 95
				MODEL	VLX 100 LP	NOTE	
SAN-EI SEKI SEISAKUSHO CO., LTD.				Air Hoist		SCALE	1/3
DWC-NO. E 389-123							

VLX100LP-PR



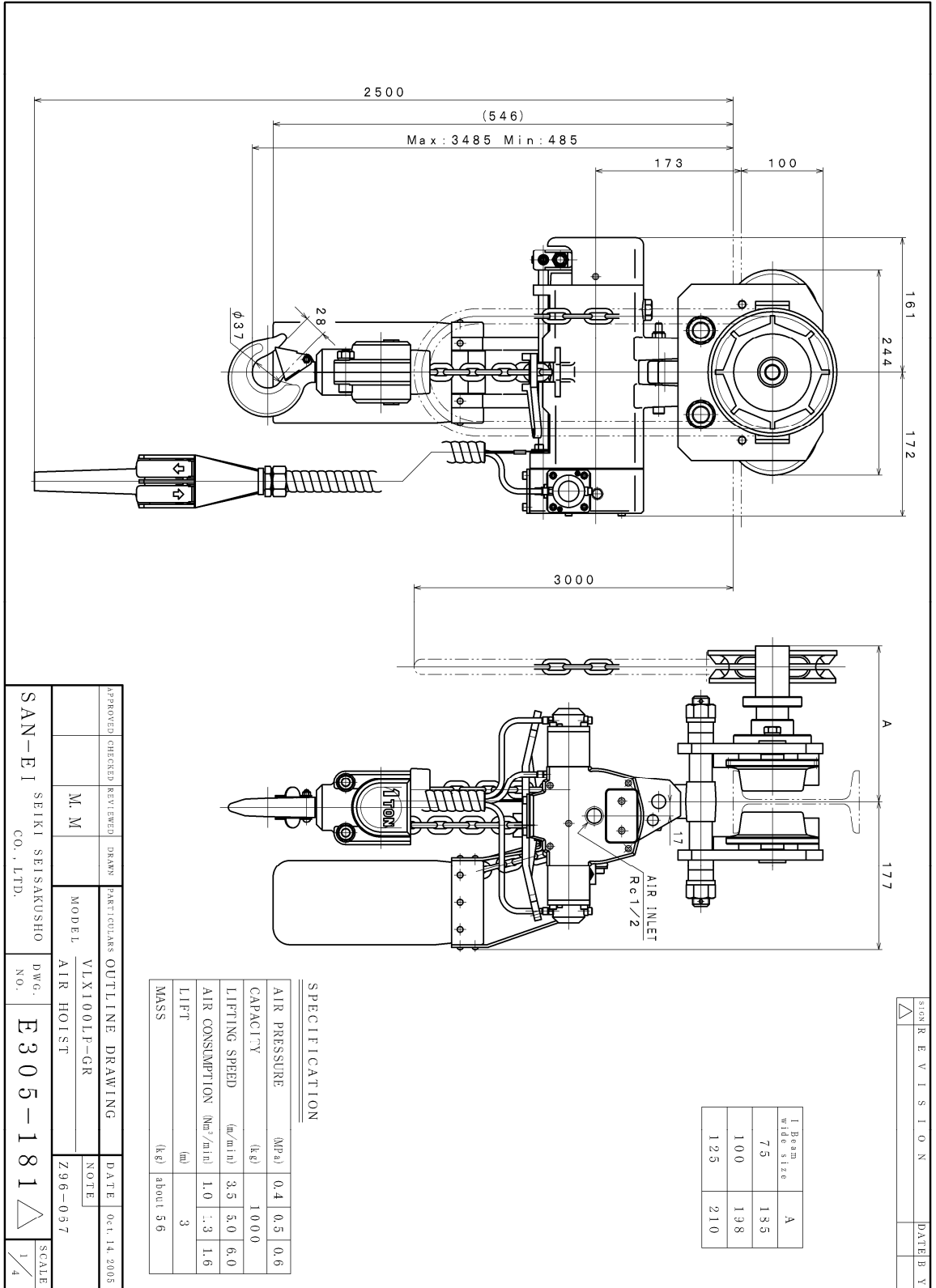
REVISION	DATE	BY

SPECIFICATION

AIR PRESSURE	(MPa)	0.4	0.5	0.6
CAPACITY	(kg)	1000		
LIFTING SPEED	(m/min)	3.5	5.0	6.0
AIR CONSUMPTION	(Nm ³ /min)	1.0	1.3	1.6
LIFT	(m)	3		
MASS	(kg)	about 45		

APPROVED	CHECKED	REVIEWED	DRAWN	PART/COLUMNS	OUTLINE DRAWING	DATE	Oct. 14, 2005
		M. M.		MODEL	VLX100LP-PR	NOTE	
SAN-EI SEIKI SEISAKUSHO CO., LTD.				MODEL	AIR HOIST	Z96-066	
DWG. NO.				E305-180		SCALE	1/4

VLX100LP-GR



NO.	REVISION	DATE	BY

APPROVED	CHECKED	REVIEWED	DRAWN	PART/CULARS	OUTLINE DRAWING	DATE	DATE
			M. M		VLX100LP-GR		05.14.2005
SAN-EI SEIKI SEISAKUSHO CO., LTD.				MODEL	AIR HOIST	NOTE	
				DWG. NO.	E305-181		
							SCALE
							1/4

VLX100LP-MR

